

JOHNSTON & MURPHY

SINCE 1850

JOHNSTON & MURPHY[®]

SINCE 1850

FALL 2020 MEN'S APPAREL

JOHNSTON & MURPHY

SINCE 1850

XC4 WOVENS



XC4 TWO TONE WINDOWPANE

Stock #: 74-8855

Color: NAVY/BLUE

Size Range: S-XXXL

Wholesale: \$51.80

M.S.R.P.: \$129.50

Description:

- Ultra smooth, light and wrinkle resistant.
- Quick-dry 93% nylon/7% spandex.
- Bias-cut back yoke enhances movement.
- Contrast facing inside collar and cuffs.
- Chest pocket.
- Shirttail hem.
- Machine wash.
- Imported



XC4 TWISTED ROPE

Stock #: 74-8856

Color: BLUE

Size Range: S-XXXL

Wholesale: \$51.80

M.S.R.P.: \$129.50

Description:

- Ultra smooth, light and wrinkle resistant.
- Quick-dry 93% nylon/7% spandex.
- Bias-cut back yoke enhances movement.
- Contrast facing inside collar and cuffs.
- Chest pocket.
- Shirttail hem.
- Machine wash.
- Imported



XC4 OPEN WINDOWPANE

Stock #: 74-8858

Color: WHITE/BLUE

Size Range: S-XXXL

Wholesale: \$51.80

M.S.R.P.: \$129.50

Description:

- Ultra smooth, light and wrinkle resistant.
- Quick-dry 93% nylon/7% spandex.
- Bias-cut back yoke enhances movement.
- Contrast facing inside collar and cuffs.
- Chest pocket.
- Shirttail hem.
- Machine wash.
- Imported



XC4 GINGHAM

Stock #: 74-8845

Color: RED

Size Range: S-XXXL

Wholesale: \$51.80

M.S.R.P.: \$129.50

Description:

- Ultra smooth, light and wrinkle resistant.
- Quick-dry 93% nylon/7% spandex.
- Bias-cut back yoke enhances movement.
- Contrast facing inside collar and cuffs.
- Chest pocket.
- Shirttail hem.
- Machine wash.
- Imported



XC4 GINGHAM

Stock #: 74-8846

Color: ORANGE

Size Range: S-XXXL

Wholesale: \$51.80

M.S.R.P.: \$129.50

Description:

- Ultra smooth, light and wrinkle resistant.
- Quick-dry 93% nylon/7% spandex.
- Bias-cut back yoke enhances movement.
- Contrast facing inside collar and cuffs.
- Chest pocket.
- Shirttail hem.
- Machine wash.
- Imported



XC4 GINGHAM

Stock #: 74-8847
 Color: NAVY
 Size Range: S-XXXL
 Wholesale: \$51.80
 M.S.R.P.: \$129.50

- Description:
- Ultra smooth, light and wrinkle resistant.
 - Quick-dry 93% nylon/7% spandex.
 - Bias-cut back yoke enhances movement.
 - Contrast facing inside collar and cuffs.
 - Chest pocket.
 - Shirttail hem.
 - Machine wash.
 - Imported

XC4 BROOCH PRINT

Stock #: 74-8848
 Color: NAVY
 Size Range: S-XXXL
 Wholesale: \$51.80
 M.S.R.P.: \$129.50

- Description:
- Printed, ultra smooth, light and wrinkle resistant.
 - Quick-dry 93% nylon/7% spandex.
 - Bias-cut back yoke enhances movement.
 - Contrast facing inside collar and cuffs.
 - Chest pocket.
 - Shirttail hem.
 - Machine wash.
 - Imported.

XC4 TRIANGLE PRINT

Stock #: 74-8849
 Color: NAVY/RED
 Size Range: S-XXXL
 Wholesale: \$51.80
 M.S.R.P.: \$129.50

- Description:
- Printed, ultra smooth, light and wrinkle resistant.
 - Quick-dry 93% nylon/7% spandex.
 - Bias-cut back yoke enhances movement.
 - Contrast facing inside collar and cuffs.
 - Chest pocket.
 - Shirttail hem.
 - Machine wash.
 - Imported.

XC4 FLORAL OUTLINE PRINT

Stock #: 74-8850
 Color: Orange
 Size Range: S-XXXL
 Wholesale: \$51.80
 M.S.R.P.: \$129.50

- Description:
- Printed, ultra smooth, light and wrinkle resistant.
 - Quick-dry 93% nylon/7% spandex.
 - Bias-cut back yoke enhances movement.
 - Contrast facing inside collar and cuffs.
 - Chest pocket.
 - Shirttail hem.
 - Machine wash.
 - Imported.

XC4 PARENTHESES PRINT

Stock #: 74-8851
 Color: Blue
 Size Range: S-XXXL
 Wholesale: \$51.80
 M.S.R.P.: \$129.50

- Description:
- Printed, ultra smooth, light and wrinkle resistant.
 - Quick-dry 93% nylon/7% spandex.
 - Bias-cut back yoke enhances movement.
 - Contrast facing inside collar and cuffs.
 - Chest pocket.
 - Shirttail hem.
 - Machine wash.
 - Imported.



XC4 MOSAIC TILE PRINT

Stock #: 74-8852
 Color: ORANGE
 Size Range: S-XXXL
 Wholesale: \$51.80
 M.S.R.P.: \$129.50

- Description:
- Printed, ultra smooth, light and wrinkle resistant.
 - Quick-dry 93% nylon/7% spandex.
 - Bias-cut back yoke enhances movement.
 - Contrast facing inside collar and cuffs.
 - Chest pocket.
 - Shirttail hem.
 - Machine wash.
 - Imported.

XC4 DOT SQUARE PRINT

Stock #: 74-7474
 Color: White/Blue
 Size Range: S-XXXL
 Wholesale: \$51.80
 M.S.R.P.: \$129.50

- Description:
- Printed, ultra smooth, light and wrinkle resistant.
 - Quick-dry 93% nylon/7% spandex.
 - Bias-cut back yoke enhances movement.
 - Contrast facing inside collar and cuffs.
 - Chest pocket.
 - Shirttail hem.
 - Machine wash.
 - Imported.

XC4 CIRCLE FOUR SQUARE PRINT

Stock #: 74-7475
 Color: BURGUNDY/NAVY
 Size Range: S-XXXL
 Wholesale: \$51.80
 M.S.R.P.: \$129.50

- Description:
- Printed, ultra smooth, light and wrinkle resistant.
 - Quick-dry 93% nylon/7% spandex.
 - Bias-cut back yoke enhances movement.
 - Contrast facing inside collar and cuffs.
 - Chest pocket.
 - Shirttail hem.
 - Machine wash.
 - Imported.

XC4 MARTINI PRINT

Stock #: 74-7477
 Color: Black Multi
 Size Range: S-XXXL
 Wholesale: \$51.80
 M.S.R.P.: \$129.50

- Description:
- Printed, ultra smooth, light and wrinkle resistant.
 - Quick-dry 93% nylon/7% spandex.
 - Bias-cut back yoke enhances movement.
 - Contrast facing inside collar and cuffs.
 - Chest pocket.
 - Shirttail hem.
 - Machine wash.
 - Imported.

XC4 AIRPLANE COMPASS PRINT

Stock #: 74-7478
 Color: Blue
 Size Range: S-XXXL
 Wholesale: \$51.80
 M.S.R.P.: \$129.50

- Description:
- Printed, ultra smooth, light and wrinkle resistant.
 - Quick-dry 93% nylon/7% spandex.
 - Bias-cut back yoke enhances movement.
 - Contrast facing inside collar and cuffs.
 - Chest pocket.
 - Shirttail hem.
 - Machine wash.
 - Imported.



XC4 ALTERNATING SKULL PRINT

Stock #: 74-7479

Color: BLUE/RED

Size Range: S-XXXL

Wholesale: \$51.80

M.S.R.P.: \$129.50

Description:

- Printed, ultra smooth, light and wrinkle resistant.
- Quick-dry 93% nylon/7% spandex.
- Bias-cut back yoke enhances movement.
- Contrast facing inside collar and cuffs.
- Chest pocket.
- Shirttail hem.
- Machine wash.
- Imported.



XC4 HEATHER MINI CHECK

Stock #: 74-7472

Color: Rust Multi

Size Range: S-XXXL

Wholesale: \$51.80

M.S.R.P.: \$129.50

Description:

- Ultra smooth, light and wrinkle resistant.
- Quick-dry 93% nylon/7% spandex.
- Bias-cut back yoke enhances movement.
- Contrast facing inside collar and cuffs.
- Chest pocket.
- Shirttail hem.
- Machine wash.
- Imported



XC4 HEATHER LAYERED ETCH LINES

Stock #: 74-7470

Color: Charcoal

Size Range: S-XXXL

Wholesale: \$51.80

M.S.R.P.: \$129.50

Description:

- Ultra smooth, light and wrinkle resistant.
- Quick-dry 93% nylon/7% spandex.
- Bias-cut back yoke enhances movement.
- Contrast facing inside collar and cuffs.
- Chest pocket.
- Shirttail hem.
- Machine wash.
- Imported



XC4 HEATHER GINGHAM

Stock #: 74-8853

Color: BLUE

Size Range: S-XXXL

Wholesale: \$51.80

M.S.R.P.: \$129.50

Description:

- Ultra smooth, light and wrinkle resistant.
- Quick-dry 93% nylon/7% spandex.
- Bias-cut back yoke enhances movement.
- Contrast facing inside collar and cuffs.
- Chest pocket.
- Shirttail hem.
- Machine wash.
- Imported.



XC4 HEATHER PLAID

Stock #: 74-8854

Color: NAVY/ORANGE

Size Range: S-XXXL

Wholesale: \$51.80

M.S.R.P.: \$129.50

Description:

- Ultra smooth, light and wrinkle resistant.
- Quick-dry 93% nylon/7% spandex.
- Bias-cut back yoke enhances movement.
- Contrast facing inside collar and cuffs.
- Chest pocket.
- Shirttail hem.
- Machine wash.
- Imported.

XC4 KNITS



XC4 REVERSIBLE QUARTER ZIP

Stock #: 74-4891

Color: INDIGO

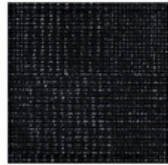
Size Range: S-XXXL

Wholesale: \$47.80

M.S.R.P.: \$119.50

Description:

- Reversible, two-in-one option travels well.
- Wrinkle-resistant, breathable, moisture-wicking stretch knit with a luxuriously soft hand.
- 70% polyester/ 26% rayon/ 4% spandex.
- Machine wash.
- Imported



XC4 REVERSIBLE QUARTER ZIP

Stock #: 74-4892

Color: NAVY

Size Range: S-XXXL

Wholesale: \$47.80

M.S.R.P.: \$119.50

Description:

- Reversible, two-in-one option travels well.
- Wrinkle-resistant, breathable, moisture-wicking stretch knit with a luxuriously soft hand.
- 70% polyester/ 26% rayon/ 4% spandex.
- Machine wash.
- Imported



XC4 REVERSIBLE QUARTER ZIP

Stock #: 74-8742

Color: BLACK

Size Range: S-XXXL

Wholesale: \$47.80

M.S.R.P.: \$119.50

Description:

- Reversible, two-in-one option travels well.
- Wrinkle-resistant, breathable, moisture-wicking stretch knit with a luxuriously soft hand.
- 70% polyester/ 26% rayon/ 4% spandex.
- Machine wash.
- Imported



XC4 REVERSIBLE QUARTER ZIP

Stock #: 74-8745

Color: Burgundy

Size Range: S-XXXL

Wholesale: \$47.80

M.S.R.P.: \$119.50

Description:

- Reversible, two-in-one option travels well.
- Wrinkle-resistant, breathable, moisture-wicking stretch knit with a luxuriously soft hand.
- 70% polyester/ 26% rayon/ 4% spandex.
- Machine wash.
- Imported



XC4 BRUSHED QUARTER ZIP

Stock #: 74-4476

Color: NAVY

Size Range: S-XXXL

Wholesale: \$47.80

M.S.R.P.: \$119.50

Description:

- XC4 brushed quarter zip, wrinkle-resistant, breathable, moisture-wicking stretch knit with a luxuriously soft hand.
- 55% Cotton /45% Polyester.
- Machine wash.
- Imported



XC4 BRUSHED QUARTER ZIP

Stock #: 74-4477

Color: Light Blue

Size Range: S-XXXL

Wholesale: \$47.80

M.S.R.P.: \$119.50

Description:

•XC4 brushed quarter zip, wrinkle-resistant, breathable, moisture-wicking stretch knit with a luxuriously soft hand.

•55% Cotton /45% Polyester.

•Machine wash.

•Imported

XC4 BRUSHED QUARTER ZIP

Stock #: 74-4489

Color: Rust

Size Range: S-XXXL

Wholesale: \$47.80

M.S.R.P.: \$119.50

Description:

•XC4 brushed quarter zip, wrinkle-resistant, breathable, moisture-wicking stretch knit with a luxuriously soft hand.

•55% Cotton /45% Polyester.

•Machine wash.

•Imported

XC4 BRUSHED QUARTER ZIP

Stock #: 74-4490

Color: Oatmeal

Size Range: S-XXXL

Wholesale: \$47.80

M.S.R.P.: \$119.50

Description:

•XC4 brushed quarter zip, wrinkle-resistant, breathable, moisture-wicking stretch knit with a luxuriously soft hand.

•55% Cotton /45% Polyester.

•Machine wash.

•Imported

XC4 QUARTER ZIP

Stock #: 74-4479

Color: Blue

Size Range: S-XXXL

Wholesale: \$47.80

M.S.R.P.: \$119.50

Description:

•XC4 quarter zip, wrinkle-resistant, breathable, moisture-wicking stretch knit with a luxuriously soft hand.

•Chest zipper.

•95% polyester/ 5%spandex.

•Machine wash.

•Imported

XC4 NYLON TRIM FULL-ZIP

Stock #: 74-4560

Color: Charcoal

Size Range: S-XXXL

Wholesale: \$67.80

M.S.R.P.: \$169.50

Description:

•Breathable performance knit with woven trim.

•Quick-dry stretch knit is climate-responsive for comfort.

•Wrinkle and stain resistant.

•Extra-smooth interior for layering ease.

•Front zip.

•Long sleeves.

•89% polyester/8% rayon/3% spandex.

•100% nylon trim.

•Machine wash.

•Imported.



XC4 NYLON TRIM FULL-ZIP

Stock #: 74-4528

Color: Navy

Size Range: S-XXXL

Wholesale: \$67.80

M.S.R.P.: \$169.50

Description:

- Breathable performance knit with woven trim.
- Quick-dry stretch knit is climate-responsive for comfort.
- Wrinkle and stain resistant.
- Extra-smooth interior for layering ease.
- Front zip.
- Long sleeves.
- 89% polyester/8% rayon/3% spandex.
- 100% nylon trim.
- Machine wash.
- Imported.

XC4 TEXTURE MELANGE FULL ZIP

Stock #: 74-4890

Color: NAVY

Size Range: S-XXXL

Wholesale: \$67.80

M.S.R.P.: \$169.50

Description:

- Breathable performance knit with contrast collar trim.
- Quick-dry stretch knit is climate-responsive for comfort.
- Wrinkle and stain resistant.
- Zip chest pocket and side zip pockets.
- Front zip.
- Long sleeves.
- 89% polyester/8% rayon/3% spandex.
- 100% nylon trim.
- Machine wash.
- Imported.

XC4 BLAZERS



XC4 CONVERTIBLE BLAZER

Stock #: 49-1658

Color: TAUPE

Size Range: S-XXXL

Wholesale: \$131.80

M.S.R.P.: \$329.50

Description:

- Performance fabrics and features deliver maximum comfort.
- Aerocool®/mesh lining keeps things cool and comfortable.
- Three button convertible placket with zipper.
- Besom pockets.
- Welt chest pocket with convertible pocket square
- Stretch interior arm gussets.
- Multiple interior pockets for gear and document security.
- Double vents.
- Functional button cuffs.
- 62% polyester /38% elastane.
- 100% polyester comfort temp fill.
- High thermal insulation, made from recyclable plastic bottles, superior breathability and easy care.
- 100% polyester lining.
- 30" long.
- Dry clean.
- Imported.

XC4 OUTERWEAR



XC4 JACKET WITH BIB

Stock #: 49-1676

Color: NAVY

Size Range: S-XXXL

Wholesale: \$131.80

M.S.R.P.: \$329.50

Description:

- Water-resistant.
- 100% poly twill shell.
- Quilted bib with knit collar and faux leather trim.
- Button front.
- Zip chest pocket and welt front pockets.
- Single back vent.
- Quilted Aerocool® poly lining.
- 100% polyester comfort temp fill.
- High thermal insulation, made from recyclable plastic bottles, superior breathability and easy care.
- Dry clean.
- Imported.

JOHNSTON & MURPHY

SINCE 1850

CORE WOVENS



LARGE FLORAL PRINT

Stock #: 74-8862

Color: MULTI

Size Range: S-XXXL

Wholesale: \$47.80

M.S.R.P.: \$119.50

Description:

- Printed 100% cotton.
- Contrast facing inside collar and cuffs.
- Convertible cuff can be worn with or without cufflinks.
- Chest pocket.
- Shirttail hem.
- Machine wash.
- Imported.



MOSAIC GRID PRINT

Stock #: 74-8863

Color: ORANGE/BLUE

Size Range: S-XXXL

Wholesale: \$47.80

M.S.R.P.: \$119.50

Description:

- Printed 100% cotton.
- Contrast facing inside collar and cuffs.
- Convertible cuff can be worn with or without cufflinks.
- Chest pocket.
- Shirttail hem.
- Machine wash.
- Imported.



FLORAL DOT PRINT

Stock #: 74-8864

Color: BLUE

Size Range: S-XXXL

Wholesale: \$47.80

M.S.R.P.: \$119.50

Description:

- Printed 100% cotton.
- Contrast facing inside collar and cuffs.
- Convertible cuff can be worn with or without cufflinks.
- Chest pocket.
- Shirttail hem.
- Machine wash.
- Imported.



FOULARD PRINT

Stock #: 74-8866

Color: BURGUNDY

Size Range: S-XXXL

Wholesale: \$47.80

M.S.R.P.: \$119.50

Description:

- Printed 100% cotton.
- Contrast facing inside collar and cuffs.
- Convertible cuff can be worn with or without cufflinks.
- Chest pocket.
- Shirttail hem.
- Machine wash.
- Imported.



MIXED SHAPES PRINT

Stock #: 74-8870

Color: NAVY/BROWN

Size Range: S-XXXL

Wholesale: \$47.80

M.S.R.P.: \$119.50

Description:

- Printed 100% cotton.
- Contrast facing inside collar and cuffs.
- Convertible cuff can be worn with or without cufflinks.
- Chest pocket.
- Shirttail hem.
- Machine wash.
- Imported.



DARK TWILL GINGHAM

Stock #: 74-8366

Color: Navy/Brown

Size Range: S-XXXL

Wholesale: \$47.80

M.S.R.P.: \$119.50

Description:

- Yarn-dyed twill-weave.
- Contrast facing inside button-down collar and cuffs.
- Convertible button cuffs can be worn with or without cufflinks.
- Chest pocket.
- Shirttail hem.
- 100% cotton.
- Machine wash.
- Imported.

DARK TWILL GINGHAM

Stock #: 74-8367

Color: Navy/Blue

Size Range: S-XXXL

Wholesale: \$47.80

M.S.R.P.: \$119.50

Description:

- Yarn-dyed twill-weave.
- Contrast facing inside button-down collar and cuffs.
- Convertible button cuffs can be worn with or without cufflinks.
- Chest pocket.
- Shirttail hem.
- 100% cotton.
- Machine wash.
- Imported.

DARK TWILL GINGHAM

Stock #: 74-8657

Color: RUST/NAVY

Size Range: S-XXXL

Wholesale: \$47.80

M.S.R.P.: \$119.50

Description:

- Yarn-dyed twill-weave.
- Contrast facing inside button-down collar and cuffs.
- Convertible button cuffs can be worn with or without cufflinks.
- Chest pocket.
- Shirttail hem.
- 100% cotton.
- Machine wash.
- Imported.

TRI-COLORED GINGHAM

Stock #: 74-8656

Color: RUST/NAVY

Size Range: S-XXXL

Wholesale: \$47.80

M.S.R.P.: \$119.50

Description:

- Yarn-dyed twill-weave.
- Contrast facing inside button-down collar and cuffs.
- Convertible button cuffs can be worn with or without cufflinks.
- Chest pocket.
- Shirttail hem.
- 100% cotton.
- Machine wash.
- Imported.

FRAMED ZIG ZAG

Stock #: 74-8658

Color: BROWN/NAVY

Size Range: S-XXXL

Wholesale: \$47.80

M.S.R.P.: \$119.50

Description:

- Yarn-dyed twill-weave.
- Contrast facing inside button-down collar and cuffs.
- Convertible button cuffs can be worn with or without cufflinks.
- Chest pocket.
- Shirttail hem.
- 100% cotton.
- Machine wash.
- Imported.



MINI BOX

Stock #: 74-8664

Color: BROWN/BLUE

Size Range: S-XXXL

Wholesale: \$47.80

M.S.R.P.: \$119.50

Description:

- Yarn-dyed twill-weave.
- Contrast facing inside button-down collar and cuffs.
- Convertible button cuffs can be worn with or without cufflinks.
- Chest pocket.
- Shirrtail hem.
- 100% cotton.
- Machine wash.
- Imported.

LARGE SCALE HOUNDSTOOTH PLAID

Stock #: 74-8660

Color: NAVY/BLUE

Size Range: S-XXXL

Wholesale: \$47.80

M.S.R.P.: \$119.50

Description:

- Yarn-dyed twill-weave.
- Contrast facing inside button-down collar and cuffs.
- Convertible button cuffs can be worn with or without cufflinks.
- Chest pocket.
- Shirrtail hem.
- 100% cotton.
- Machine wash.
- Imported.

QUAD ROPE SQUARES

Stock #: 74-8662

Color: BURGUNDY/BLUE

Size Range: S-XXXL

Wholesale: \$47.80

M.S.R.P.: \$119.50

Description:

- Yarn-dyed twill-weave.
- Contrast facing inside button-down collar and cuffs.
- Convertible button cuffs can be worn with or without cufflinks.
- Chest pocket.
- Shirrtail hem.
- 100% cotton.
- Machine wash.
- Imported.

STACKED CUBE

Stock #: 74-8665

Color: BURGUNDY/BLUE

Size Range: S-XXXL

Wholesale: \$47.80

M.S.R.P.: \$119.50

Description:

- Yarn-dyed twill-weave.
- Contrast facing inside button-down collar and cuffs.
- Convertible button cuffs can be worn with or without cufflinks.
- Chest pocket.
- Shirrtail hem.
- 100% cotton.
- Machine wash.
- Imported.

FOOTBALL OXFORD PRINT

Stock #: 74-8873

Color: BLUE/BROWN

Size Range: S-XXXL

Wholesale: \$47.80

M.S.R.P.: \$119.50

Description:

- Printed 100% Oxford cotton.
- Contrast facing inside collar and cuffs.
- Convertible cuff can be worn with or without cufflinks.
- Chest pocket.
- Shirrtail hem.
- Machine wash.
- Imported.



STAG OXFORD PRINT

Stock #: 74-8874

Color: GRAY/BLUE

Size Range: S-XXXL

Wholesale: \$47.80

M.S.R.P.: \$119.50

Description:

- Printed 100% Oxford cotton.
- Contrast facing inside collar and cuffs.
- Convertible cuff can be worn with or without cufflinks.
- Chest pocket.
- Shirrtail hem.
- Machine wash.
- Imported.



FRAMED HEATHER GINGHAM

Stock #: 74-8667

Color: NAVY/BLUE

Size Range: S-XXXL

Wholesale: \$47.80

M.S.R.P.: \$119.50

Description:

- Yarn-dyed cotton and special weaving creates unique tones and patterns.
- Contrast facing inside the button-down collar and button cuffs.
- Chest pocket.
- Shirrtail hem.
- 100% cotton.
- Machine wash.
- Imported.



FRAMED HEATHER CHECK

Stock #: 74-8669

Color: RUST/NAVY

Wholesale: \$47.80

M.S.R.P.: \$119.50

Description:

- Yarn-dyed cotton and special weaving creates unique tones and patterns.
- Contrast facing inside the button-down collar and button cuffs.
- Chest pocket.
- Shirrtail hem.
- 100% cotton.
- Machine wash.
- Imported.



BRUSHED HEATHER LINE CHECK

Stock #: 74-8671

Color: MULTI

Size Range: S-XXXL

Wholesale: \$47.80

M.S.R.P.: \$119.50

Description:

- Yarn-dyed cotton, brushed for a flannel-soft feel.
- Button-down collar.
- Contrast facing inside collar and button cuffs.
- Chest pocket.
- Shirrtail hem.
- 100% cotton.
- Machine wash.
- Imported.



BRUSHED HEATHER GINGHAM

Stock #: 74-8670

Color: BROWN MULTI

Wholesale: \$47.80

M.S.R.P.: \$119.50

Description:

- Yarn-dyed cotton, brushed for a flannel-soft feel.
- Button-down collar.
- Contrast facing inside collar and button cuffs.
- Chest pocket.
- Shirrtail hem.
- 100% cotton.
- Machine wash.
- Imported.

JOHNSTON & MURPHY

SINCE 1850

CORE KNITS



KNIT SHIRT

Stock #: 74-4825

Color: Navy Gingham

Size Range: S-XXXL

Wholesale: \$47.80

M.S.R.P.: \$119.50

Description:

- Soft, double-faced knit with fineline stripe inside.
- Wear as a shirt, or layered jacket-style over a tee.
- Button-flap chest pockets.
- Metal buttons.
- Shirttail hem.
- 70% poly/26% rayon/4% spandex.
- Machine wash.
- Imported.

BUTTON FRONT KNIT

Stock #: 74-4885

Color: navy

Size Range: S-XXXL

Wholesale: \$47.80

M.S.R.P.: \$119.50

Description:

- Soft, double-faced knit with fineline stripe inside.
- Wear as a shirt, or layered jacket-style over a tee.
- Button-flap chest pockets.
- Metal buttons.
- Shirttail hem.
- 70% poly/26% rayon/4% spandex.
- Machine wash.
- Imported.

LS PLAID SHIRT JACKET

Stock #: 74-8876

Color: BROWN

Size Range: S-XXXL

Wholesale: \$63.80

M.S.R.P.: \$159.50

Description:

- Long sleeve button front shirt jacket.
- 70% polyester/26% rayon/4% spandex.
- Rounded shirttail hem.
- Chest pocket.
- Machine wash.
- Imported.

LS PLAID SHIRT JACKET

Stock #: 74-8880

Color: NAVY

Size Range: S-XXXL

Wholesale: \$63.80

M.S.R.P.: \$159.50

Description:

- Long sleeve button front shirt jacket.
- 70% polyester/26% rayon/4% spandex.
- Rounded shirttail hem.
- Chest pocket.
- Machine wash.
- Imported.

REVERSIBLE SOLID QUARTER-ZIP

Stock #: 74-4561

Color: Navy/Brown

Size Range: S-XXXL

Wholesale: \$47.80

M.S.R.P.: \$119.50

Description:

- Soft cotton-blend knit reverses from solid to coordinating heather shade.
- Quarter zip placket with leather-look pull.
- Tonal cover-stitch details.
- 60% cotton/40% polyester.
- Machine wash.
- Imported.



REVERSIBLE SOLID QUARTER-ZIP

Stock #: 74-4562
 Color: Rust/Oatmeal
 Size Range: S-XXXL
 Wholesale: \$47.80
 M.S.R.P.: \$119.50

- Description:
- Soft cotton-blend knit reverses from solid to coordinating heather shade.
 - Quarter zip placket with leather-look pull.
 - Tonal cover-stitch details.
 - 60% cotton/40% polyester.
 - Machine wash.
 - Imported.

REVERSIBLE SOLID QUARTER-ZIP

Stock #: 74-4563
 Color: Blue/Light Gray
 Size Range: S-XXXL
 Wholesale: \$47.80
 M.S.R.P.: \$119.50

- Description:
- Soft cotton-blend knit reverses from solid to coordinating heather shade.
 - Quarter zip placket with leather-look pull.
 - Tonal cover-stitch details.
 - 60% cotton/40% polyester.
 - Machine wash.
 - Imported.

REVERSIBLE SOLID QUARTER-ZIP

Stock #: 74-4565
 Color: Burgundy/Charcoal
 Size Range: S-XXXL
 Wholesale: \$47.80
 M.S.R.P.: \$119.50

- Description:
- Soft cotton-blend knit reverses from solid to coordinating heather shade.
 - Quarter zip placket with leather-look pull.
 - Tonal cover-stitch details.
 - 60% cotton/40% polyester.
 - Machine wash.
 - Imported.

REVERSIBLE SOLID QUARTER-ZIP

Stock #: 74-4566
 Color: Oatmeal/Light Gray
 Size Range: S-XXXL
 Wholesale: \$47.80
 M.S.R.P.: \$119.50

- Description:
- Soft cotton-blend knit reverses from solid to coordinating heather shade.
 - Quarter zip placket with leather-look pull.
 - Tonal cover-stitch details.
 - 60% cotton/40% polyester.
 - Machine wash.
 - Imported.

REVERSIBLE SOLID QUARTER ZIP

Stock #: 74-4467
 Color: CHARCOAL/BLUE
 Size Range: S-XXXL
 Wholesale: \$47.80
 M.S.R.P.: \$119.50

- Description:
- Soft cotton-blend knit reverses from solid to coordinating heather shade.
 - Quarter zip placket with leather-look pull.
 - Tonal cover-stitch details.
 - 60% cotton/40% polyester.
 - Machine wash.
 - Imported.



REVERSIBLE SOLID QUARTER ZIP

Stock #: 74-4468

Color: OLIVE/CHARCOAL

Size Range: S-XXXL

Wholesale: \$47.80

M.S.R.P.: \$119.50

Description:

- Soft cotton-blend knit reverses from solid to coordinating heather shade.
- Quarter zip placket with leather-look pull.
- Tonal cover-stitch details.
- 60% cotton/40% polyester.
- Machine wash.
- Imported.

BIRDSEYE QUARTER BUTTON

Stock #: 74-4893

Color: NAVY

Size Range: S-XXXL

Wholesale: \$47.80

M.S.R.P.: \$119.50

Description:

- Birdseye pattern quarter button pullover.
- Stretch knit with a luxuriously soft hand.
- Quarter button with contrast interior placket.
- 78% polyester/ 20% rayon/ 2% spandex.
- Machine wash.
- Imported

BIRDSEYE QUARTER BUTTON

Stock #: 74-4894

Color: BURGUNDY

Size Range: S-XXXL

Wholesale: \$47.80

M.S.R.P.: \$119.50

Description:

- Birdseye pattern quarter button pullover.
- Stretch knit with a luxuriously soft hand.
- Quarter button with contrast interior placket.
- 78% polyester/ 20% rayon/ 2% spandex.
- Machine wash.
- Imported

BIRDSEYE QUARTER BUTTON

Stock #: 74-4895

Color: KHAKI

Size Range: S-XXXL

Wholesale: \$47.80

M.S.R.P.: \$119.50

Description:

- Birdseye pattern quarter button pullover.
- Stretch knit with a luxuriously soft hand.
- Quarter button with contrast interior placket.
- 78% polyester/ 20% rayon/ 2% spandex.
- Machine wash.
- Imported

MELANGE KNIT FULL-ZIP

Stock #: 74-3150

Color: Navy

Size Range: S-XXXL

Wholesale: \$67.80

M.S.R.P.: \$169.50

Description:

- Subtly shaded cotton melange knit with solid woven polyester shoulder yokes.
- Faux-leather piping trims.
- Zip chest pocket.
- Contrast topstitch detailing.
- 70% cotton/30% polyester.
- Machine wash.
- Imported.



QUILTED PANEL FULL ZIP

Stock #: 74-4887

Color: BLACK

Size Range: S-XXXL

Wholesale: \$67.80

M.S.R.P.: \$169.50

Description:

- Quilted front panel full zip.
- Solid knit back and sleeves.
- Faux suede trim at top of the collar and shoulder panel.
- Welt side front pockets.
- 87% cotton/13% polyester/spandex.
- Machine wash.
- Imported.

CORE BLAZERS



WINDOWPANE PLAID BLAZER

Stock #: 49-1659

Color: navy/brown

Size Range: S-XXXL

Wholesale: \$139.80

M.S.R.P.: \$349.50

Description:

- Tailored wool blazer.
- Two button closure.
- Besom flap pockets with a single ticket pocket.
- Welt chest pocket with convertible pocket square.
- Multiple interior pockets.
- Double back vent.
- Non-functional button cuffs.
- Lapel pin.
- 100% wool.
- 55% polyester / 45% taylor lining.
- Dry clean.
- 30" long.



PRINTED PLUSH BLAZER

Stock #: 49-1663

Color: Brown

Size Range: S-XXXL

Wholesale: \$139.80

M.S.R.P.: \$349.50

Description:

- Super-soft and plush with a velvety feel.
- Two button.
- Removable lapel pin.
- Welt chest pocket.
- Besom flap pockets.
- Faux suede trimmed ticket pocket.
- Double back vents.
- Fully lined.
- 100% polyester.
- Dry clean.
- Imported.
- 30" long.



PLUSH BIB BLAZER

Stock #: 49-1664

Color: Camel

Size Range: S-XXXL

Wholesale: \$139.80

M.S.R.P.: \$349.50

Description:

- Super-soft and plush corduroy with a velvety feel.
- Two button.
- Removable zip-up quilted bib.
- Removable wingtip shoe lapel pin.
- Lapel button tab with faux-suede trim.
- Welt chest pocket.
- Besom flap pockets.
- Ticket pocket with faux suede trim.
- Double back vents.
- Fully lined.
- 100% polyester.
- Dry clean.
- Imported.
- 30" long.

CORE OUTERWEAR



QUILTED HEATHERED VEST

Stock #: 49-1669

Color: NAVY

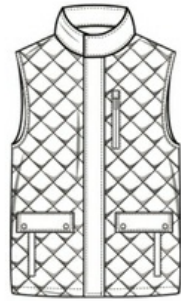
Size Range: S-XXXL

Wholesale: \$71.80

M.S.R.P.: \$179.50

Description:

- Channel-quilted Heather wool blend.
- Faux-suede trim placket and collar.
- Welt pockets with faux-suede trim.
- 55% wool 25% polyester 20% viscose.
- 100% polyester.
- Dry clean.
- Imported.



ANTIQUE COTTON VEST

Stock #: 49-1667

Color: BROWN

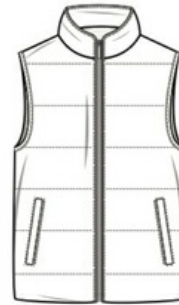
Size Range: S-XXXL

Wholesale: \$71.80

M.S.R.P.: \$179.50

Description:

- Specially washed for vintage character.
- Stand collar.
- Dual-entry pockets with side welt, top snap flap.
- Fully lined with a soft brushed herringbone poly.
- 55% cotton/45% polyester
- Dry clean.
- Imported.



REVERSIBLE MICROSUEDE VEST

Stock #: 49-1668

Color: TAUPE/BROWN

Size Range: S-XXXL

Wholesale: \$95.80

M.S.R.P.: \$239.50

Description:

- Faux micro suede channel quilt reverses to a quilt birdseye knit.
- Faux micro suede with welt pockets; knit quilted side with welt pockets.
- Faux-leather trim at pockets, zip front and collar.
- Micro suede side 100% polyester.
- Knit side: 100% cotton.
- 100% polyfill.
- Dry clean.
- Imported.



FAUX SUEDE JACKET

Stock #: 49-1670

Color: TAUPE

Size Range: S-XXXL

Wholesale: \$75.80

M.S.R.P.: \$189.50

Description:

- Plush microsuede with perforated details.
- Faux-leather trim.
- Front zip.
- Stand collar with knit interior.
- Snap welt pockets.
- Brushed lining with interior pocket.
- 100% polyester.
- Dry clean.
- Imported.



QUILTED BIB JACKET

Stock #: 49-1673

Color: TAN

Size Range: S-XXXL

Wholesale: \$139.80

M.S.R.P.: \$349.50

Description:

- Quilted jacket with zip out bib.
- Stand collar.
- Faux leather trim.
- Stow-away hood at the collar.
- Removable zip out quilted bib.
- Patch flap snap chest pockets.
- Dual side entry with flap snap pockets and faux leather trimmed zip pocket.
- Adjustable snap cuffs.
- 100% polyester.
- Polyester lining and fill.
- Dry clean.
- Imported.

QUILTED BIB JACKET

Stock #: 49-1672

Color: NAVY

Size Range: S-XXXL

Wholesale: \$139.80

M.S.R.P.: \$349.50

Description:

- Quilted jacket with zip out bib.
- Stand collar.
- Faux leather trim.
- Stow-away hood at the collar.
- Removable zip out quilted bib.
- Patch flap snap chest pockets.
- Dual side entry with flap snap pockets and faux leather trimmed zip pocket.
- Adjustable snap cuffs.
- 100% polyester.
- Polyester lining and fill.
- Dry clean.
- Imported.

QUILTED HEATHERED JACKET

Stock #: 49-1674

Color: BROWN

Size Range: S-XXXL

Wholesale: \$139.80

M.S.R.P.: \$349.50

Description:

- Quilted printed heather jacket with cordury and faux leather trims.
- Stand collar with cordury trim.
- Patch flap snap chest pockets.
- Dual side entry with flap snap pockets.
- Back adjustable snap tabs for fit.
- 100% polyester.
- Quilted knit back panel lining.
- Polyester fill and lining.
- Dry clean.
- Imported.

ANTIQUE COTTON JACKET

Stock #: 49-1671

Color: BROWN

Size Range: S-XXXL

Wholesale: \$119.80

M.S.R.P.: \$299.50

Description:

- Specially washed for vintage character.
- Stand collar with corduroy trim
- Removable fleece/rib-knit collar zip-up bib.
- Zip chest pockets.
- Side welt pockets.
- Adjustable snap cuffs.
- 55% cotton 45% polyester.
- Print poly lining quilted with polyfill.
- Dry clean.
- Imported.

WINDOWPANE WOOL COAT WITH BIB

Stock #: 49-1677

Color: NAVY/BROWN

Size Range: S-XXXL

Wholesale: \$131.80

M.S.R.P.: \$329.50

Description:

- Button front with stand collar and faux-leather trim.
- Removable quilted faux suede, zip-up bib.
- Zip chest pocket.
- Front welt pockets with faux-leather trim.
- 50% Wool/40% polyester/10% other fibers.
- Lining: 100% quilted polyester.
- Fill: 100% polyester.
- Dry clean.
- Imported.



HEATHERED WOOL COAT WITH BIB

Stock #: 49-1678

Color: OATMEAL

Size Range: S-XXXL

Wholesale: \$131.80

M.S.R.P.: \$329.50

Description:

- Button front with stand collar and faux-suede trim.
- Removable quilted poly zip-up bib with faux-leather trim.
- Faux leather trim at collar.
- Front welt pockets.
- 50% wool 50% other fibers.
- Lining: 100% quilted polyester.
- Fill: 100% polyester.
- Dry clean.
- Imported.



WOOL COAT WITH PRINTED BIB

Stock #: 49-1680

Color: WHISKEY

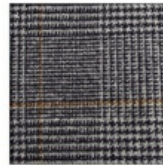
Size Range: S-XXXL

Wholesale: \$131.80

M.S.R.P.: \$329.50

Description:

- Button front with stand collar and faux-leather trim.
- Removable printed, zip-up bib with faux-leather trim.
- Zip chest pocket.
- Front welt pockets with faux-leather trim.
- 52% wool 48% polyester.
- Lining: 100% partial quilted polyester.
- Fill: 100% polyester.
- Dry clean.
- Imported.



PLAID WOOL COAT

Stock #: 49-1681

Color: RUST

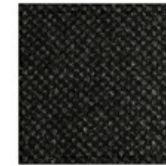
Size Range: S-XXXL

Wholesale: \$131.80

M.S.R.P.: \$329.50

Description:

- Plaid wool with stand collar.
- Front zip with button placket.
- Zipper chest and front pockets with faux-suede trim.
- 52% wool 48% other fibers.
- Lining: quilted 100% polyester.
- Fill: 100% polyester.
- Dry clean.
- Imported.



MINI PATTERN WOOL COAT

Stock #: 49-1679

Color: CHARCOAL

Wholesale: \$131.80

M.S.R.P.: \$329.50

Description:

- Mini pattern wool with removable inside faux fur collar.
- Front zip with button placket.
- Zipper chest and front pockets with faux-suede trim.
- 55% wool 45% other fibers
- Lining: quilted 100% poly
- Fill: 100% poly.
- Dry clean.
- Imported.

JOHNSTON & MURPHY

SINCE 1850

CORE PANTS



SLIM FIT DENIM JEANS

Stock #: 74-3571

Color: Dark Wash

Size Range: 32-34, 36, 38, 40; INSEAM LENGTH: 30' & 32'

Wholesale: \$47.80

M.S.R.P.: \$119.50

Description:

- 5-pocket.
- Double-needle topstitching.
- 80% cotton/13% Tencel®/lyocell/ 5% poly/2% elastine.
- Machine wash.
- Imported.

SLIM FIT DENIM JEANS

Stock #: 74-3572

Color: Medium Wash

Size Range: 32-34, 36, 38, 40; INSEAM LENGTH: 30' & 32'

Wholesale: \$47.80

M.S.R.P.: \$119.50

Description:

- 5-pocket.
- Double-needle topstitching.
- 80% cotton/13% Tencel®/lyocell/ 5% poly/2% elastine.
- Machine wash.
- Imported.

SLIM FIT DENIM JEANS

Stock #: 74-3573

Color: Light Wash

Size Range: 32-34, 36, 38, 40; INSEAM LENGTH: 30' & 32'

Wholesale: \$47.80

M.S.R.P.: \$119.50

Description:

- 5-pocket.
- Double-needle topstitching.
- 80% cotton/13% Tencel®/lyocell/ 5% poly/2% elastine.
- Machine wash.
- Imported.

FIVE POCKET HEATHERED PANT

Stock #: 74-4487

Color: WALNUT

Size Range: 32-34, 36, 38, 40; INSEAM LENGTH: 30' & 32'

Wholesale: \$47.80

M.S.R.P.: \$119.50

Description:

- Versatile jean-style pants in soft, brushed enzyme washed cotton with a hint of stretch for over all comfort and lasting fit.
- Classic 5-pocket styling.
- 35% Cotton/31% Modal /31% Coolmax /3% Spandex.
- Machine wash.
- Imported.

FIVE POCKET HEATHERED PANT

Stock #: 74-4488

Color: CHARCOAL

Size Range: 32-34, 36, 38, 40; INSEAM LENGTH: 30' & 32'

Wholesale: \$47.80

M.S.R.P.: \$119.50

Description:

- Versatile jean-style pants in soft, brushed enzyme washed cotton with a hint of stretch for over all comfort and lasting fit.
- Classic 5-pocket styling.
- 35% Cotton/31% Modal /31% Coolmax /3% Spandex.
- Machine wash.
- Imported.

JOHNSTON & MURPHY COLLECTION WOVENS



COLLECTION ARROW DASH

Stock #: 74-8839

Color: NAVY

Wholesale: \$71.80

M.S.R.P.: \$179.50

Description:

- Finest 100% cotton, European fabrics from Italian and German fabric mills in premium and unique dobby weaves for added interest and luster.
- Point collar with removable signature Johnston & Murphy metal collar stays.
- Single chest pocket.
- Adjustable button cuffs.
- French placket front.
- Subtle contrast fabric at inside neck band and inside cuffs.
- Imitation pearl buttons.
- Machine Wash.
- Imported.



COLLECTION TWO-TONE HOUNDSTOOTH

Stock #: 74-8844

Color: brn/navy

Wholesale: \$71.80

M.S.R.P.: \$179.50

Description:

- Finest 100% cotton, European fabrics from Italian and German fabric mills in premium and unique dobby weaves for added interest and luster.
- Point collar with removable signature Johnston & Murphy metal collar stays.
- Single chest pocket.
- Adjustable button cuffs.
- French placket front.
- Subtle contrast fabric at inside neck band and inside cuffs.
- Imitation pearl buttons.
- Machine Wash.
- Imported.